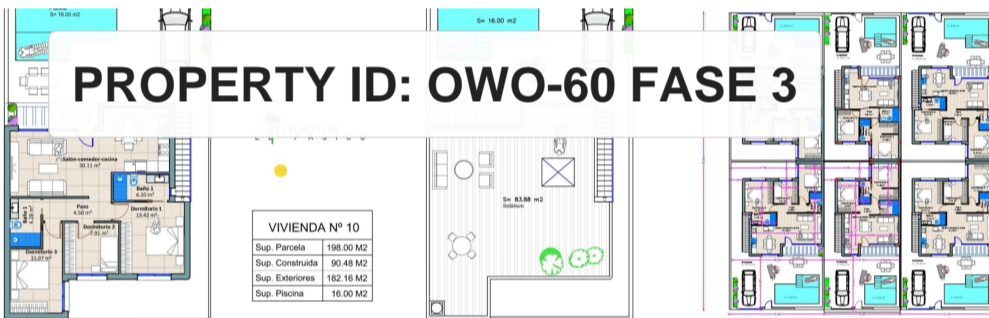


**SUPERFICIES**

V.	CONSTRUIDA	EXTERIORES Y SOLARIUM	PARCELA
V-1	90.48 M2	98.28 + 83.88 = 182.16 M2	198.00 M2
V-2	73.62 M2	83.85 + 67.75 = 151.60 M2	162.00 M2
V-3	73.62 M2	83.85 + 67.75 = 151.60 M2	162.00 M2
V-4	73.62 M2	83.85 + 67.75 = 151.60 M2	162.00 M2
V-5	73.62 M2	83.85 + 67.75 = 151.60 M2	162.00 M2
V-6	73.62 M2	83.85 + 67.75 = 151.60 M2	162.00 M2
V-7	73.62 M2	83.85 + 67.75 = 151.60 M2	162.00 M2
V-8	73.62 M2	83.85 + 67.75 = 151.60 M2	162.00 M2



**PROPERTY ID: OWO-60 FASE 3**

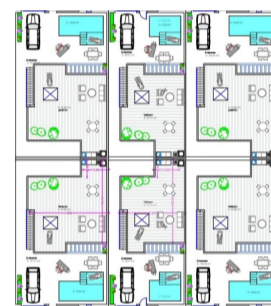


**VIVIENDA Nº 10**

Sup. Parcela	198.00 M2
Sup. Construida	90.48 M2
Sup. Exteriores	182.16 M2
Sup. Piscina	16.00 M2

**SUPERFICIES**

V.	CONSTRUIDA	EXTERIORES Y SOLARIUM	PARCELA
V-1	90.48 M2	98.28 + 83.88 = 182.16 M2	198.00 M2
V-2	73.62 M2	83.85 + 67.75 = 151.60 M2	162.00 M2
V-3	73.62 M2	83.85 + 67.75 = 151.60 M2	162.00 M2
V-4	73.62 M2	83.85 + 67.75 = 151.60 M2	162.00 M2
V-5	73.62 M2	83.85 + 67.75 = 151.60 M2	162.00 M2
V-6	73.62 M2	83.85 + 67.75 = 151.60 M2	162.00 M2
V-7	73.62 M2	83.85 + 67.75 = 151.60 M2	162.00 M2
V-8	73.62 M2	83.85 + 67.75 = 151.60 M2	162.00 M2



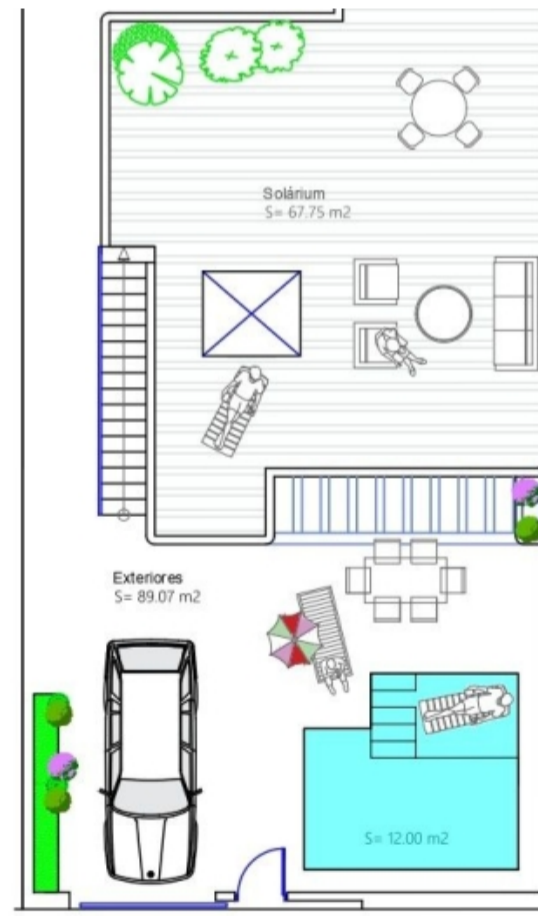
**VIVIENDA Nº 55-56-57-58**

Sup. Parcela	168.30 M2
Sup. Construida	73.62 M2
Sup. Exteriores	89.07 M2
Sup. Piscina	12.00 M2



**VIVIENDAS 57-58**

Sup. Parcela	168.30 M2
Sup. Construida	73.62 M2
Sup. Exteriores	89.07 M2
Sup. Piscina	12.00 M2



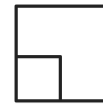
# till salu i Torre-Pacheco

€324,900

. RESIDENCIAL EL PASICO FASE 3 - New build villa with 3 bedrooms in Torre-Pacheco, Costa Blanca, Spain.



90 m<sup>2</sup>



203



3



2



+34 609 97 72 62



[www.bostad-utland.se](http://www.bostad-utland.se)



[info@bostad-utland.se](mailto:info@bostad-utland.se)